

# Pz.Kpfw. II Ausf. a2

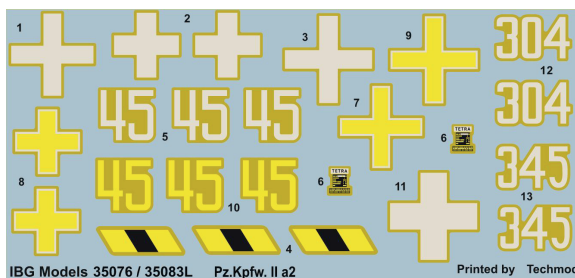
## German Light Tank



Cat. No. 35076 / 35083L  
Scale 1/35



### Decals / Kalkomanie



### Photo-etched Parts / Elementy Fototrawione



		VALLEJO	HATAKA	LIFE COLOR	MR HOBBY	AK INTERACTIVE
German Grey	A	71.052	HTK-_164	UA208	H32	RC057
Dark Brown	B	71.042	HTK-_168	UA412	H462	RC268
Rust	C	71.130	HTK-_132	LC32	H47	AK708
Brown Leather	D	72.740	HTK-_186	UA764	H460	AK3031
Gunmetal	F	71.072	HTK-_106	LC26	H018	RC015
Black	G	71.057	HTK-_100	LC02	H12	RC001
Wood	H	71.077	HTK-_172	UA714	H37	AK780
Ivory	J	71.075	HTK-_184	UA232	H313	RC046



**Element assembled in previous step**  
*Element złożony we wcześniejszym etapie*



**Version to choose**  
*Wersja do wyboru*



**Paint colour**  
*Kolor farby*



**Element after assembly in current step**  
*Element po złożeniu w aktualnym etapie*



**Decal**  
*Kalkomania*

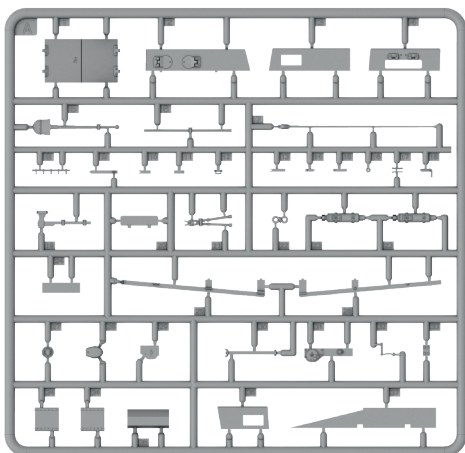
**Please follow the steps of the instructions strictly. Glue and paint not included.**

*Proszę postępować ściśle według etapów instrukcji. Klej i farby nie wchodzą w skład zestawu.*

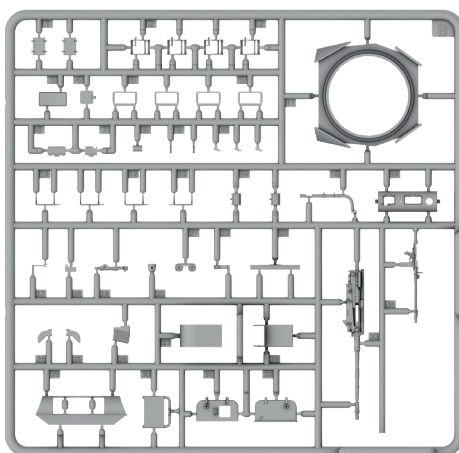
IBG Models  
ul. Benedykta Hertza 2  
04-603 Warszawa  
Poland

tel +48 22 8159150  
fax +48 22 8159151  
ibgsc@ibg.com.pl  
www.ibg.com.pl  
www.ibgmodels.com

**Frame A / Ramka A**



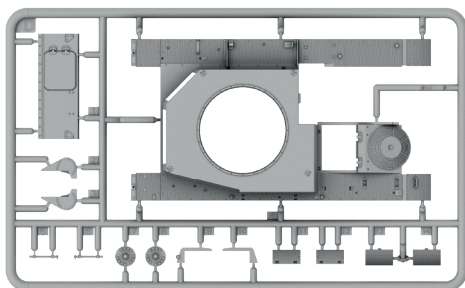
**Frame B / Ramka B**



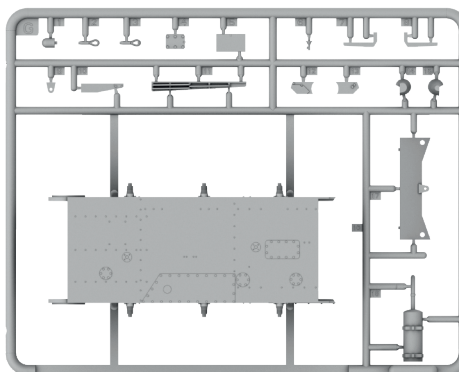
**Frame E x2 / Ramka E x2**



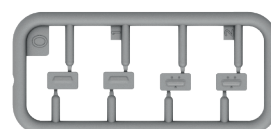
**Frame D / Ramka D**



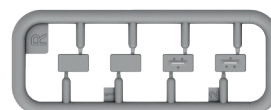
**Frame G / Ramka G**



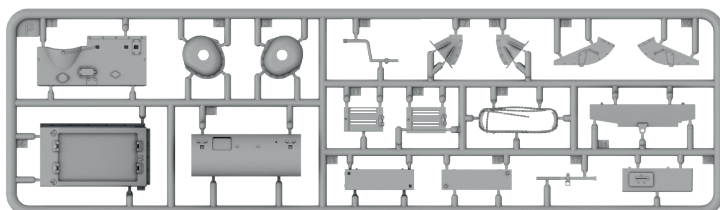
**Frame O / Ramka O**



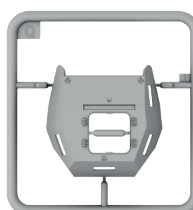
**Frame R / Ramka R**



**Frame P / Ramka P**



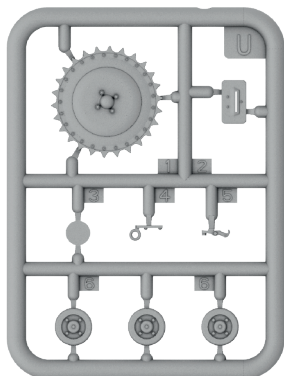
**Frame Q / Ramka Q**



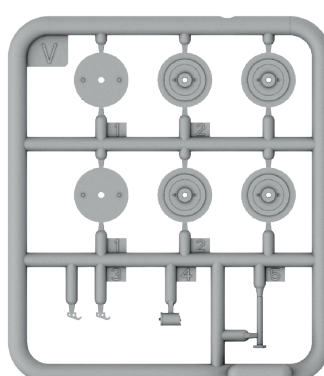
**Frame T / Ramka T**



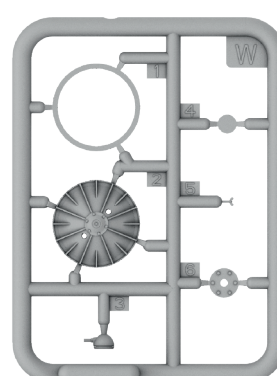
**Frame U x2 / Ramka U x2**



**Frame V x6 / Ramka V x6**



**Frame W x2 / Ramka W x2**

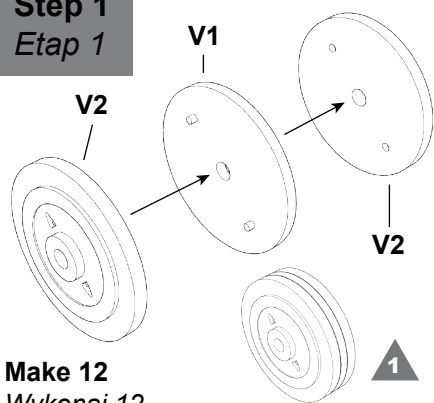


**Track links / Ogniwka gąsienic**



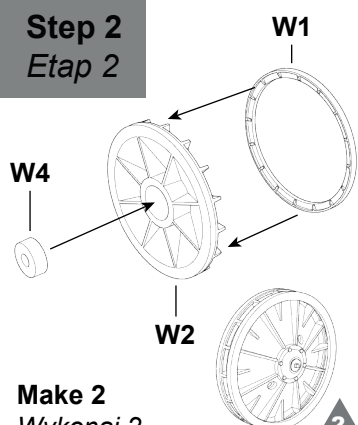


### Step 1 Etap 1



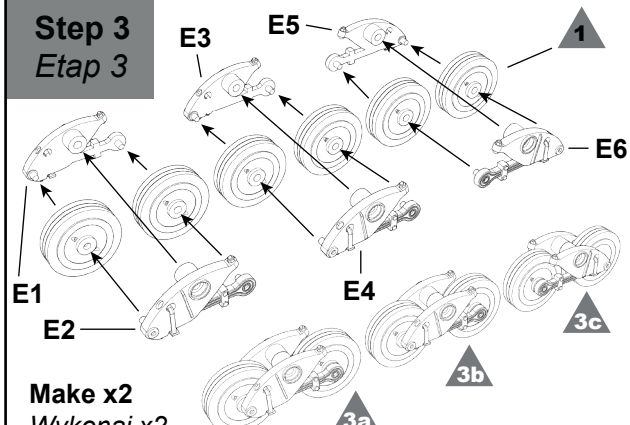
Make 12  
Wykonaj 12

### Step 2 Etap 2



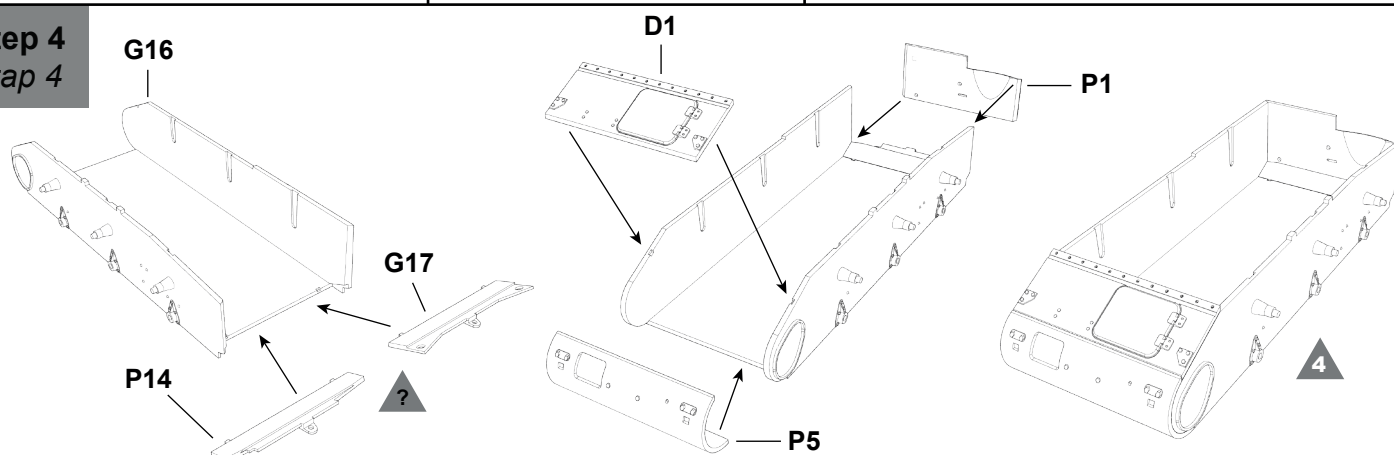
Make 2  
Wykonaj 2

### Step 3 Etap 3



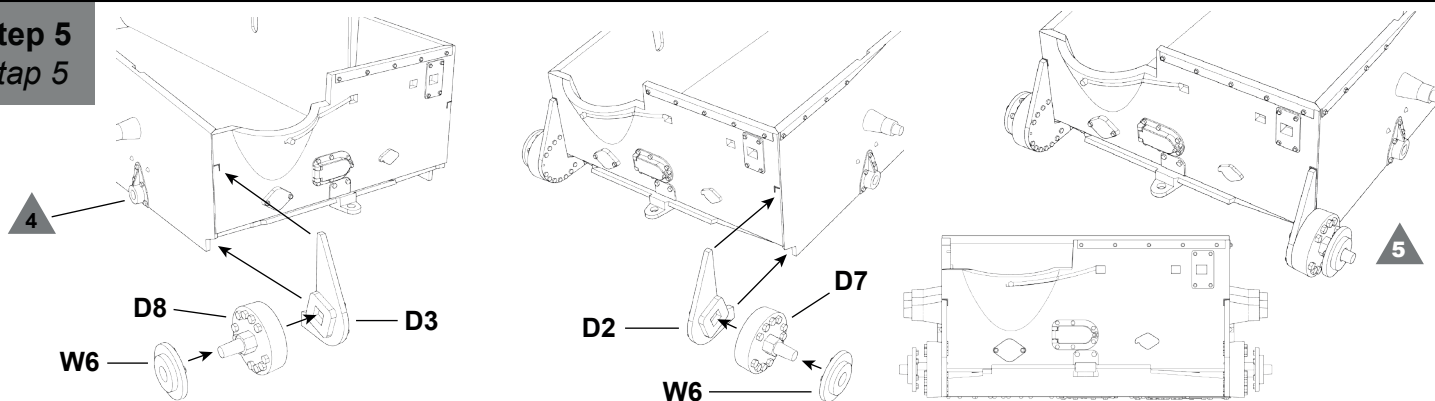
Make x2  
Wykonaj x2

### Step 4 Etap 4

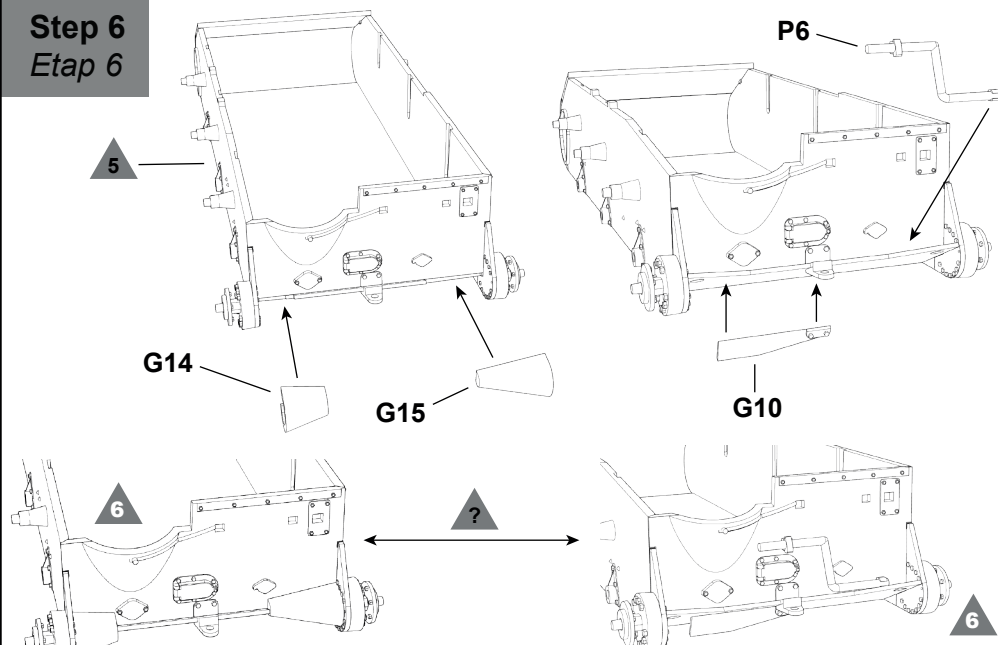


Use part P14 for the version with reinforcing cones (Verstärkungs kegeln) or part G17 for the version without them.  
Użyj elementu P14 dla wersji ze stożkami wzmacniającymi (Verstärkungs kegeln) lub G17 dla wersji bez nich

### Step 5 Etap 5



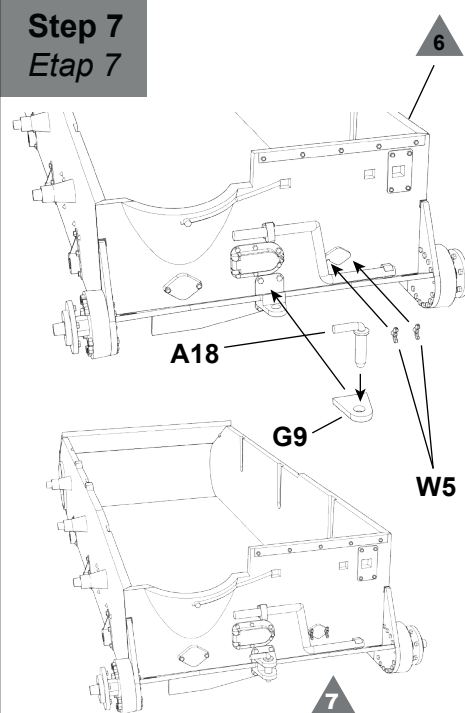
### Step 6 Etap 6



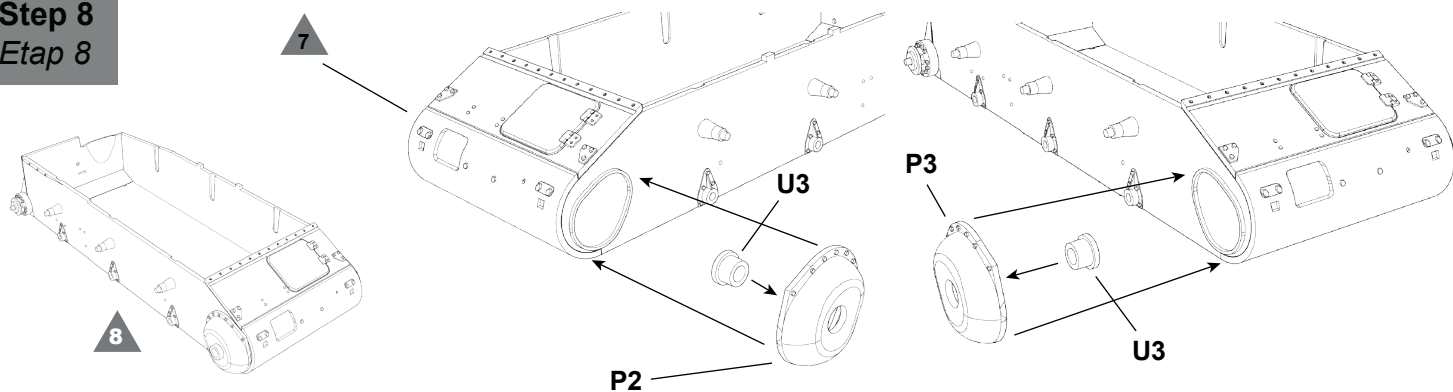
With reinforcing cones (Verstärkungs kegeln)  
Ze stożkami wzmacniającymi (Verstärkungs kegeln)

Without reinforcing cones  
Bez stożków wzmacniających

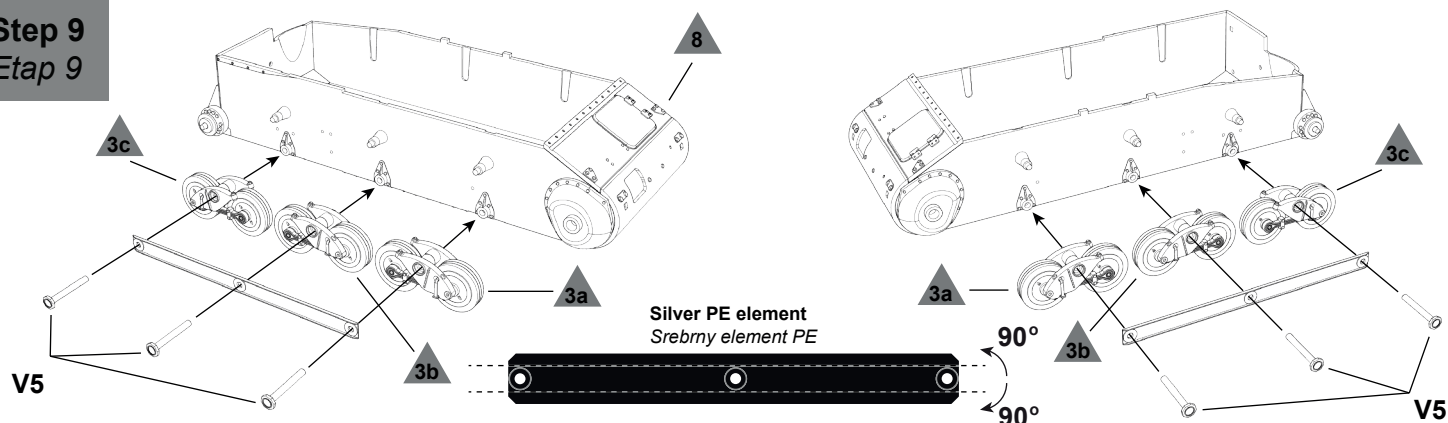
### Step 7 Etap 7



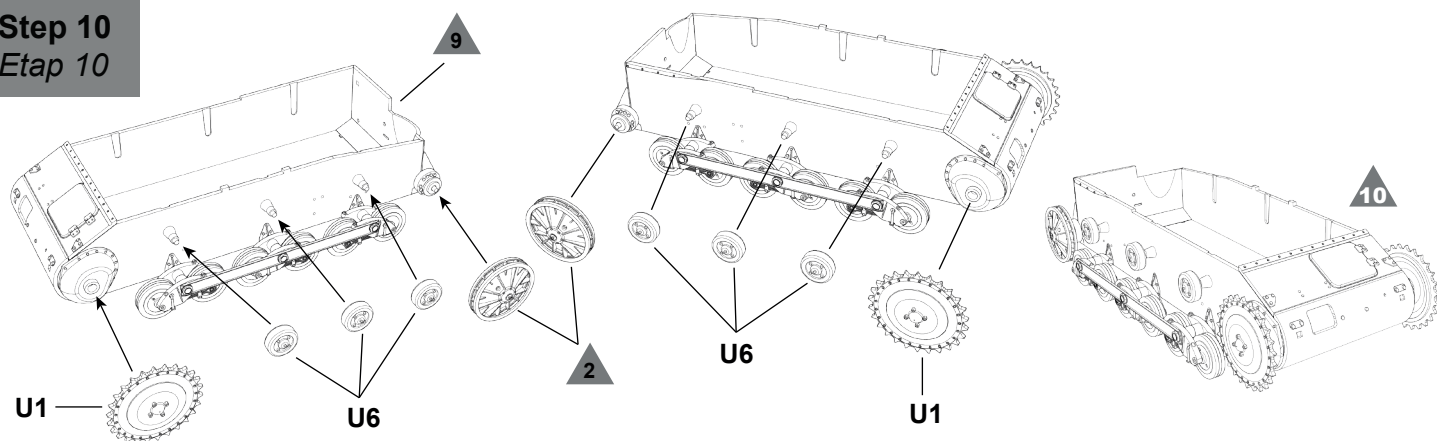
## Step 8 Etap 8



## Step 9 Etap 9

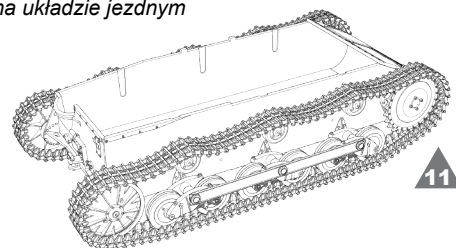
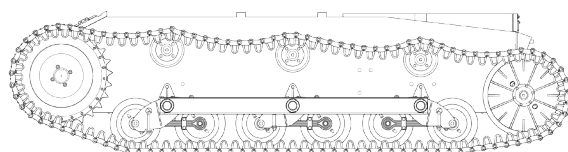
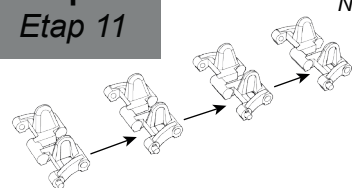


## Step 10 Etap 10



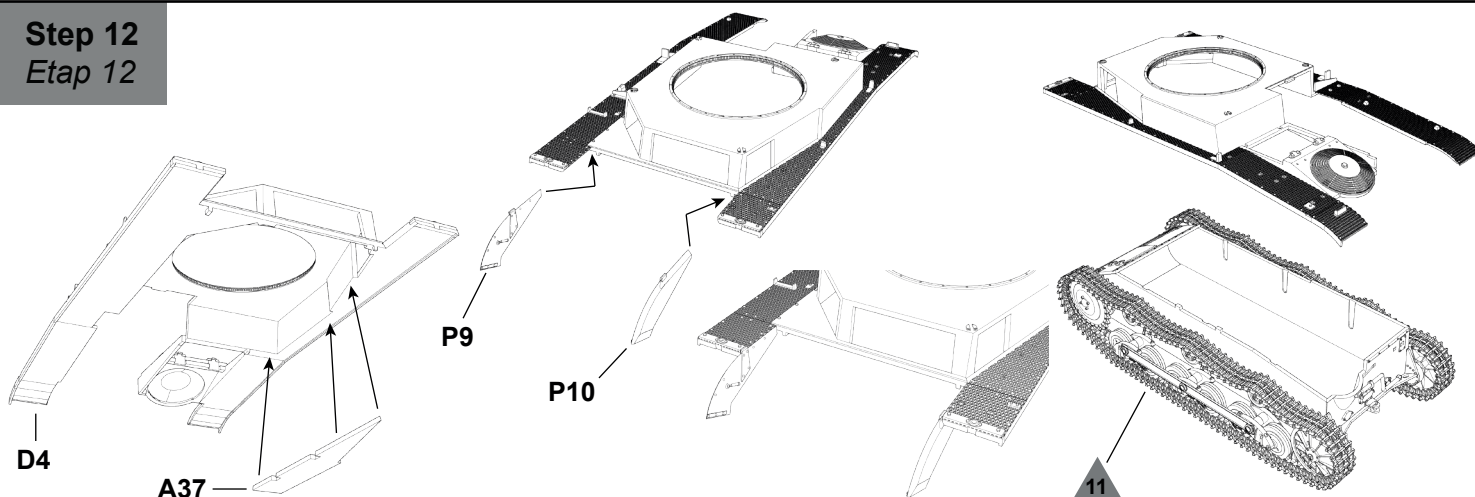
## Step 11 Etap 11

Do not glue the links together before final assembly on the drive system  
Nie przyklejaj ogni w ąsienic do siebie przed ostatecznym złozeniem na układzie jezdnym



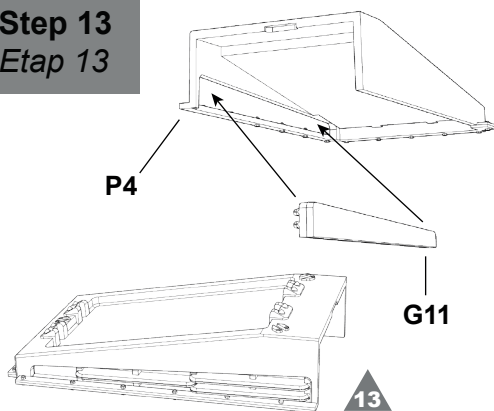
Use 107 track links per side  
Użyj 107 ogni w ąsienic po obu stronach

## Step 12 Etap 12

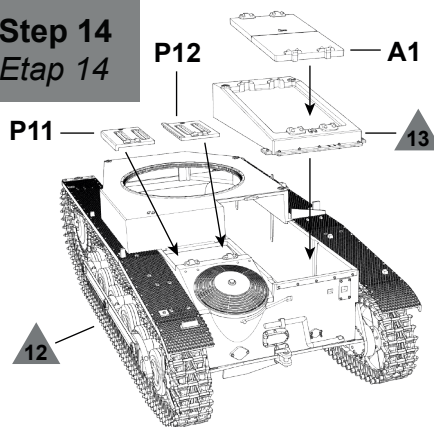




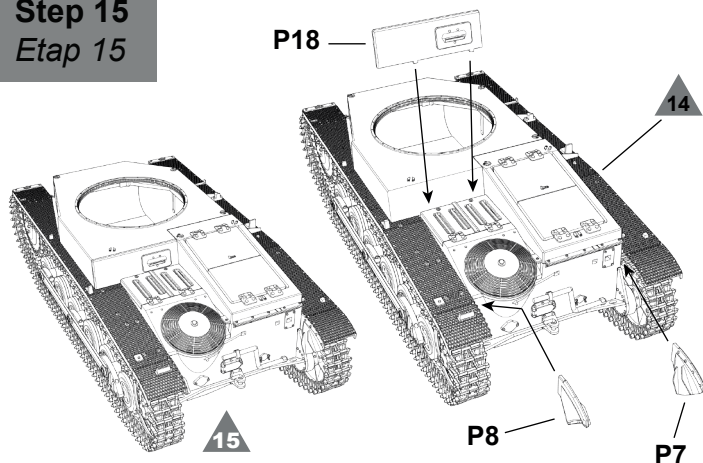
**Step 13**  
*Etap 13*



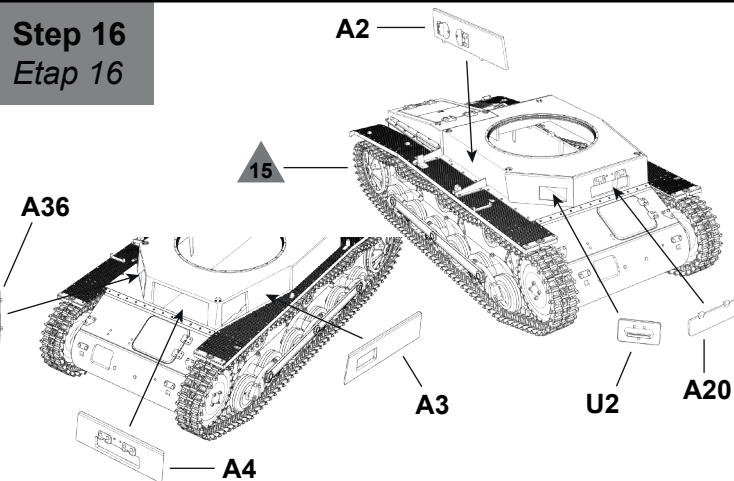
**Step 14**  
*Etap 14*



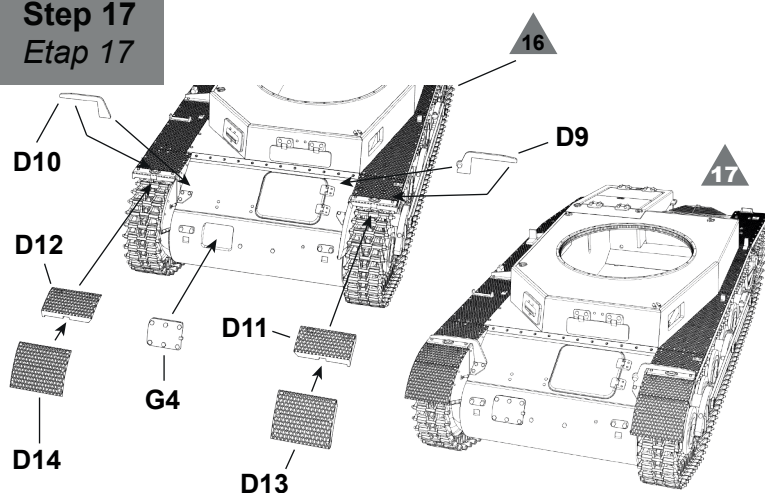
**Step 15**  
*Etap 15*



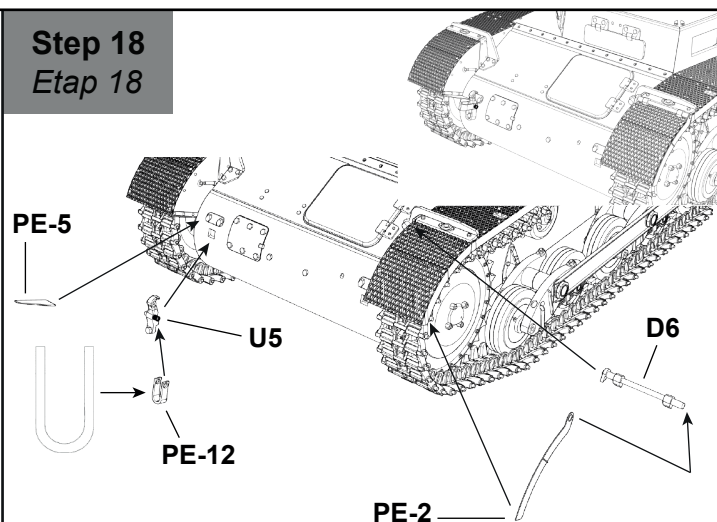
**Step 16**  
*Etap 16*



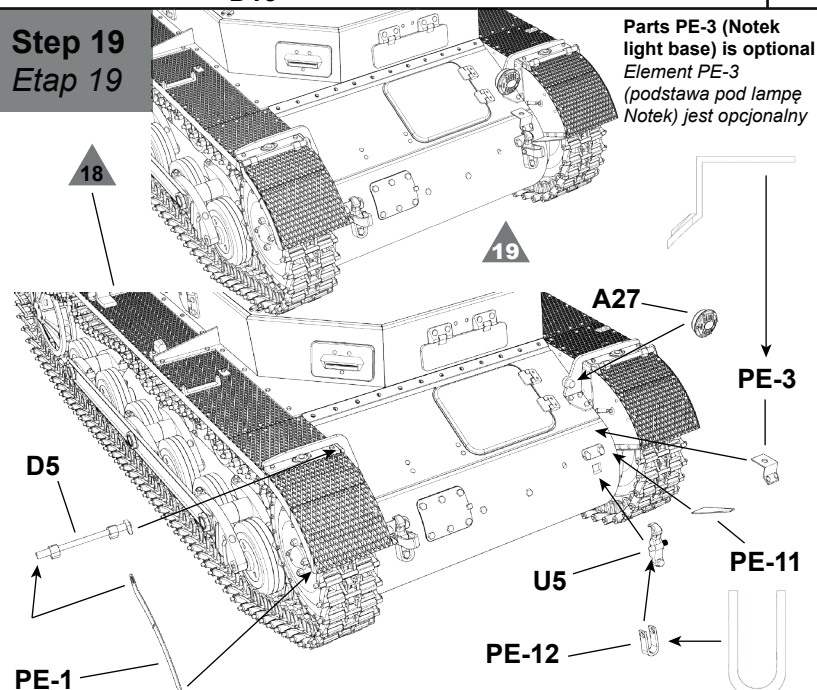
**Step 17**  
*Etap 17*



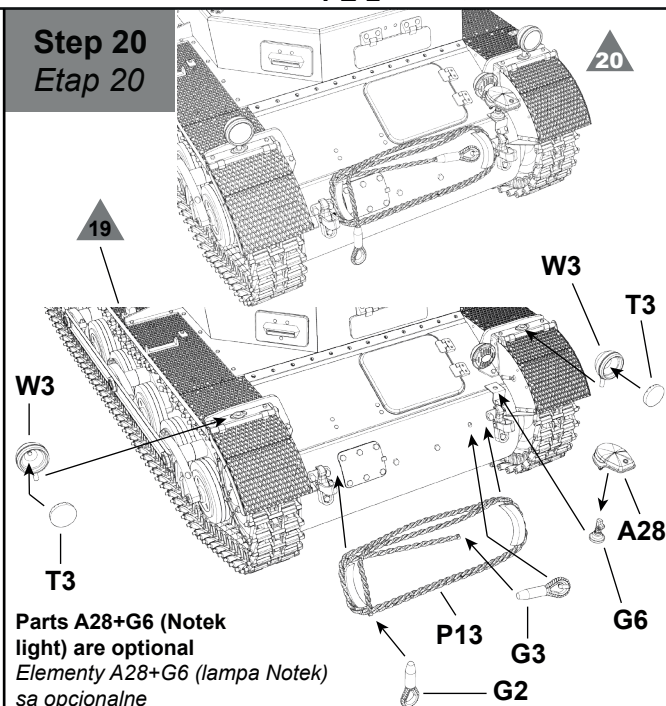
**Step 18**  
*Etap 18*



**Step 19**  
*Etap 19*

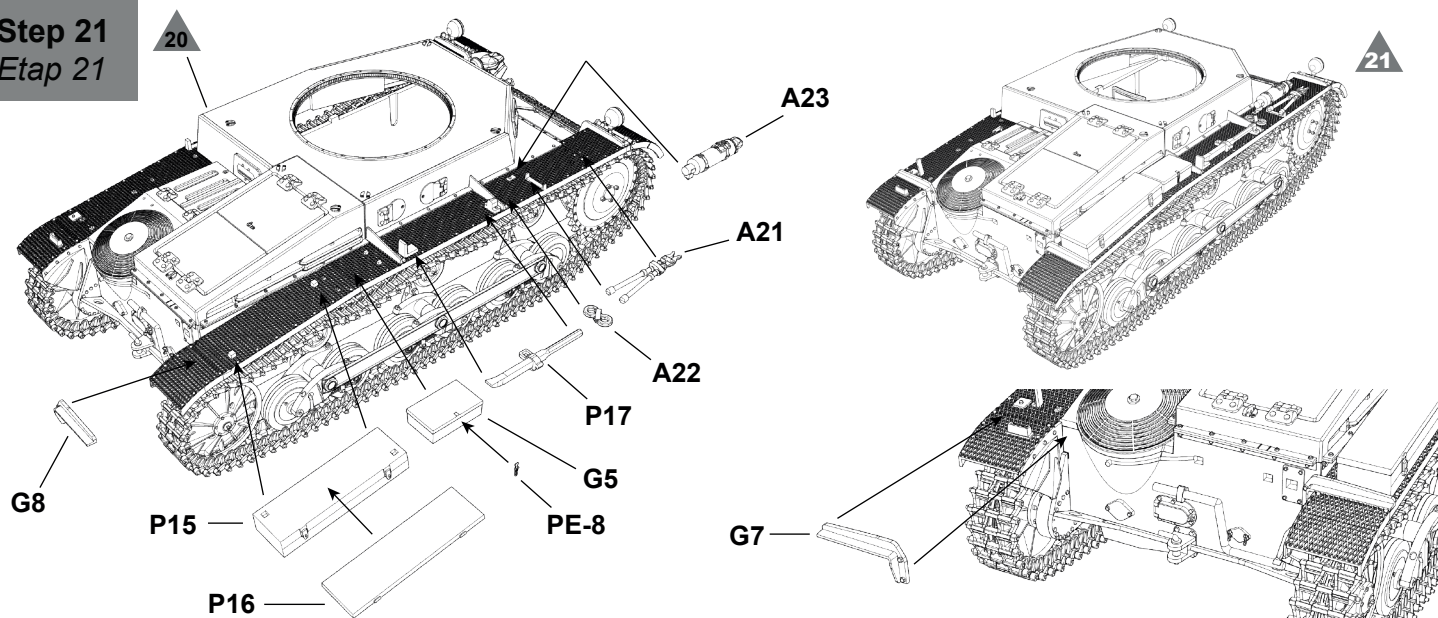


**Step 20**  
*Etap 20*

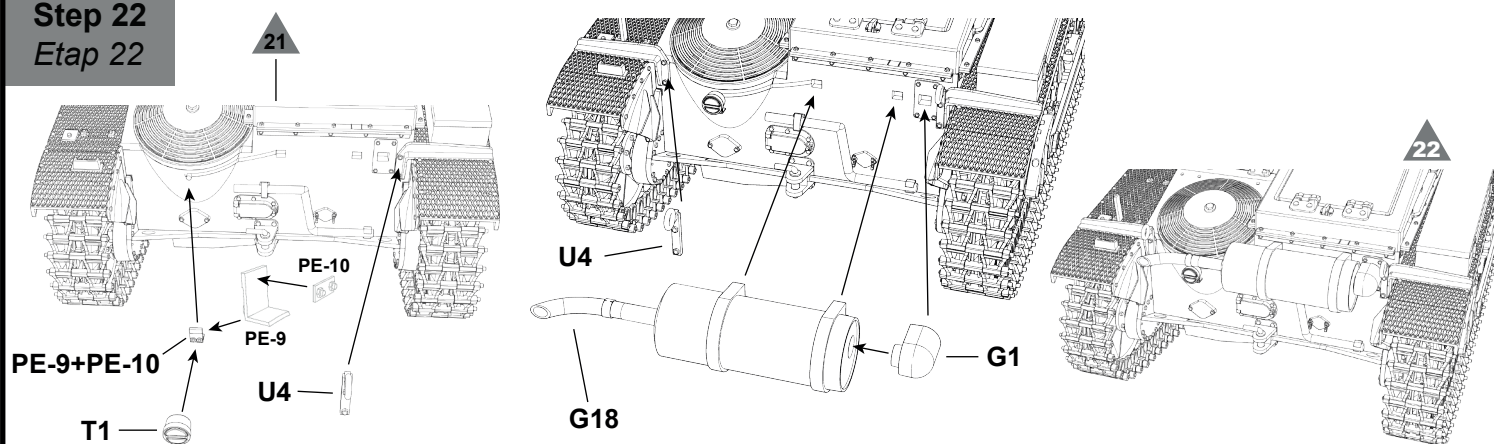




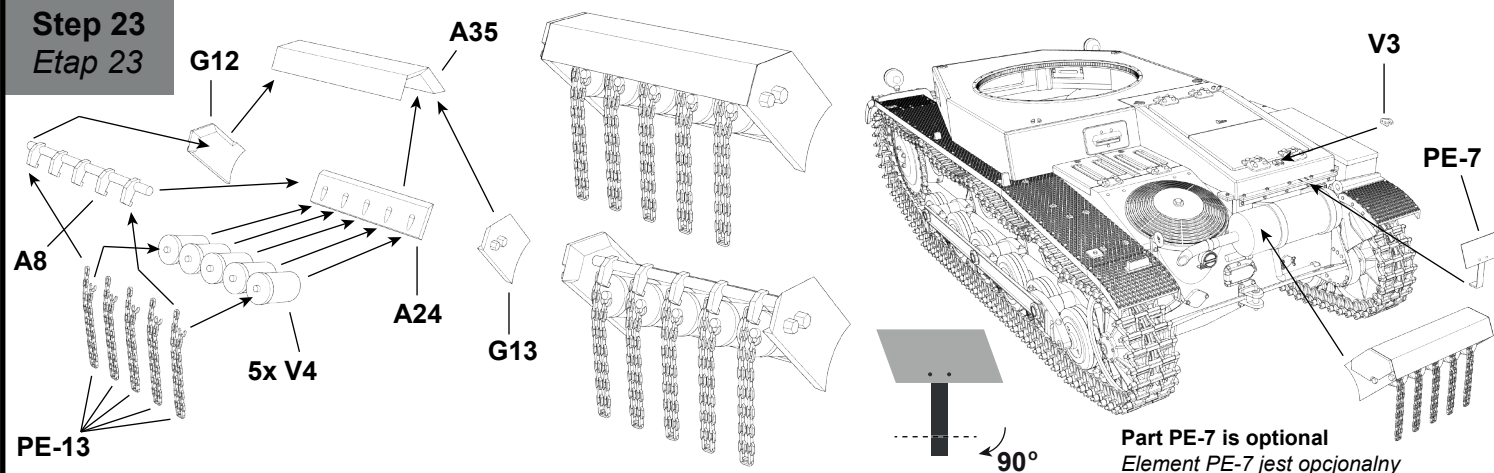
## Step 21 Etap 21



## Step 22 Etap 22

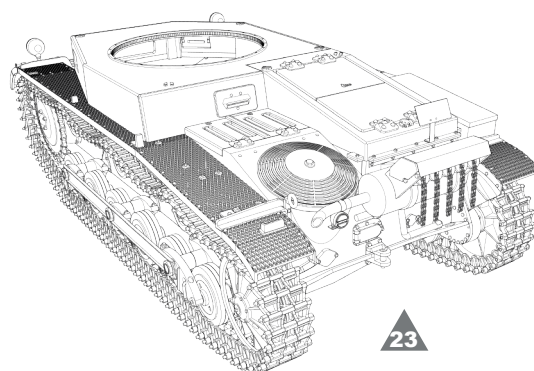
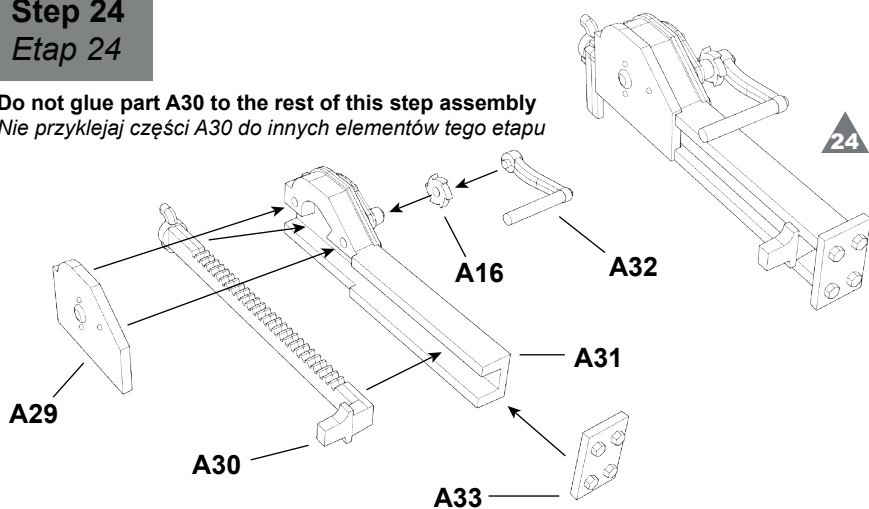


## Step 23 Etap 23



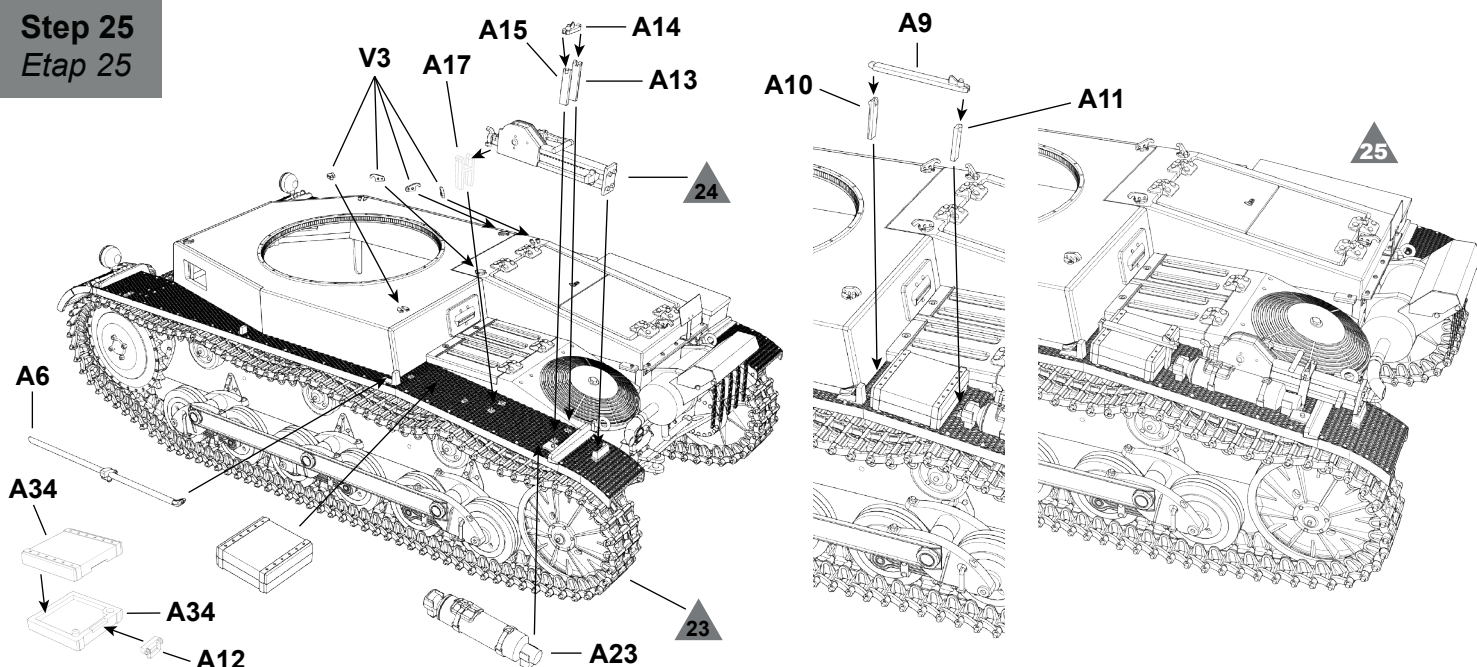
## Step 24 Etap 24

Do not glue part A30 to the rest of this step assembly  
Nie przyklejaj części A30 do innych elementów tego etapu

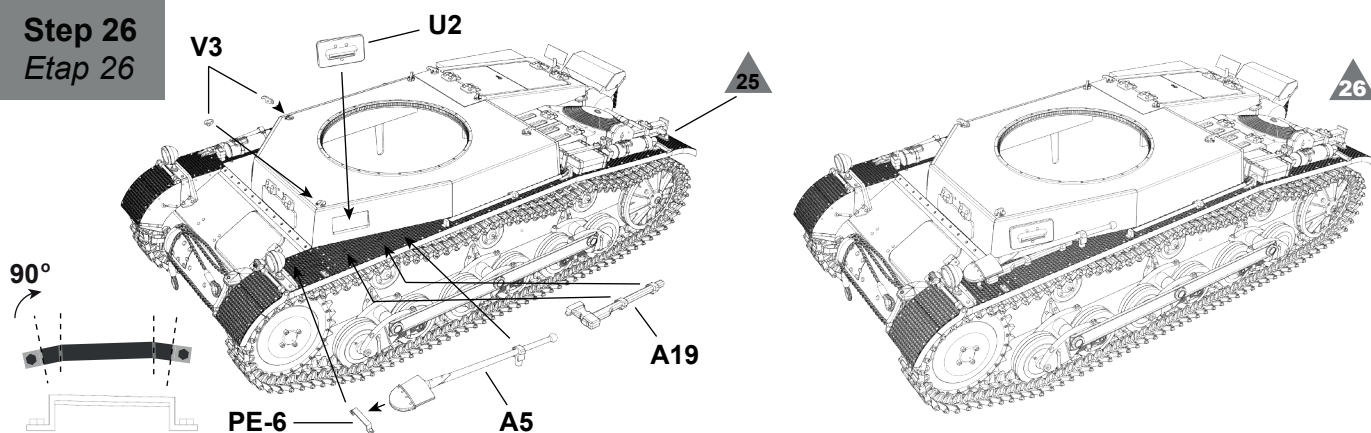




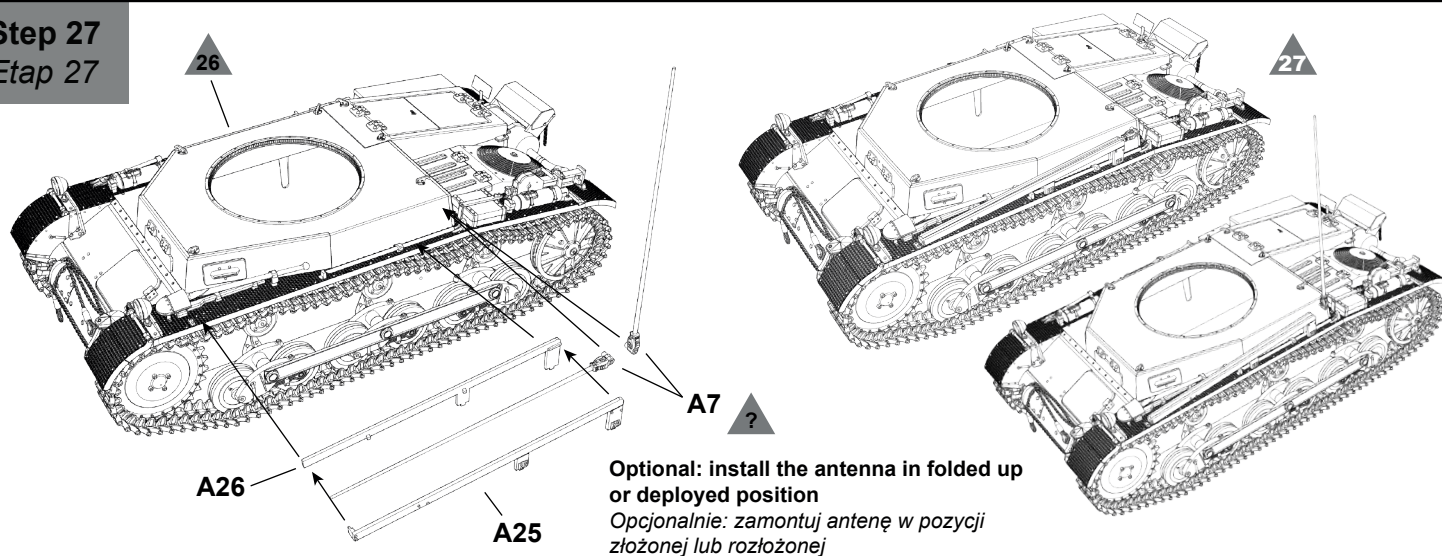
## Step 25 Etap 25



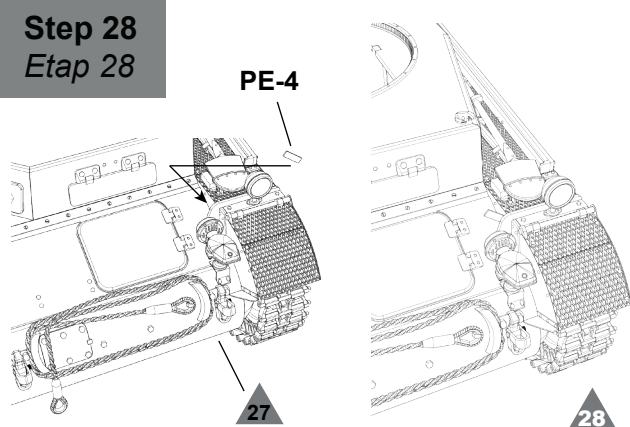
## Step 26 Etap 26



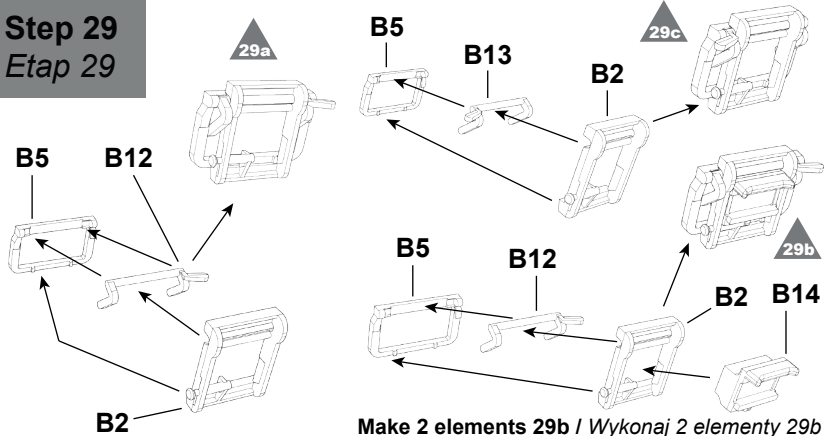
## Step 27 Etap 27



## Step 28 Etap 28

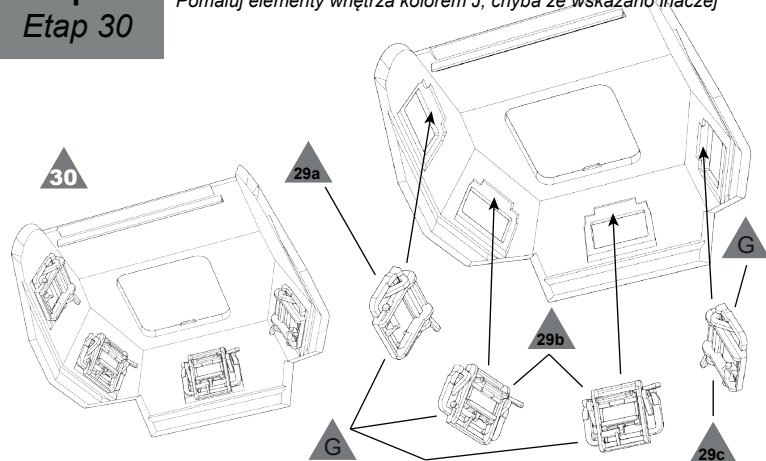


## Step 29 Etap 29

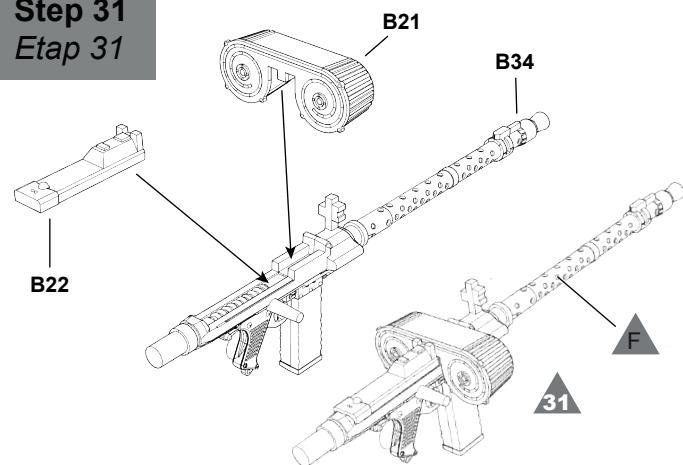


### Step 30 Etap 30

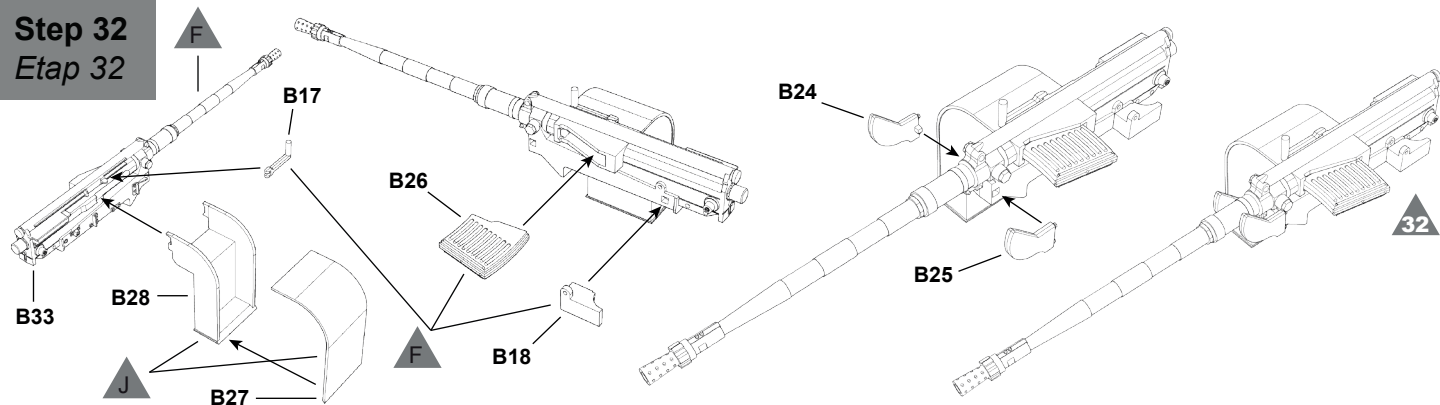
Paint the elements of the interior in kolor J unless stated otherwise  
Pomaluj elementy wnętrza kolorem J, chyba że wskazano inaczej



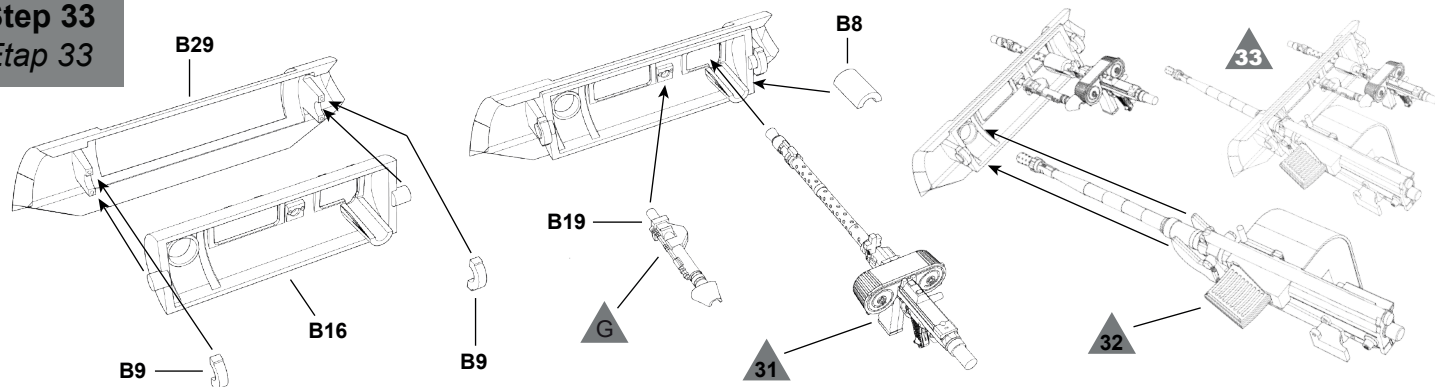
### Step 31 Etap 31



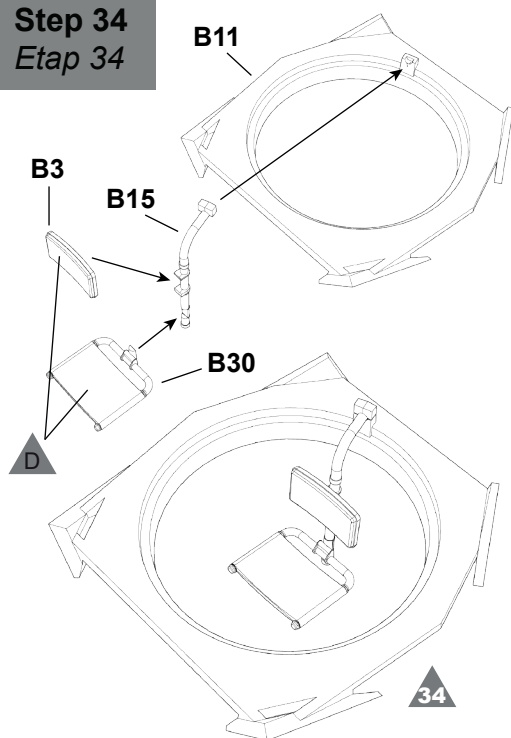
### Step 32 Etap 32



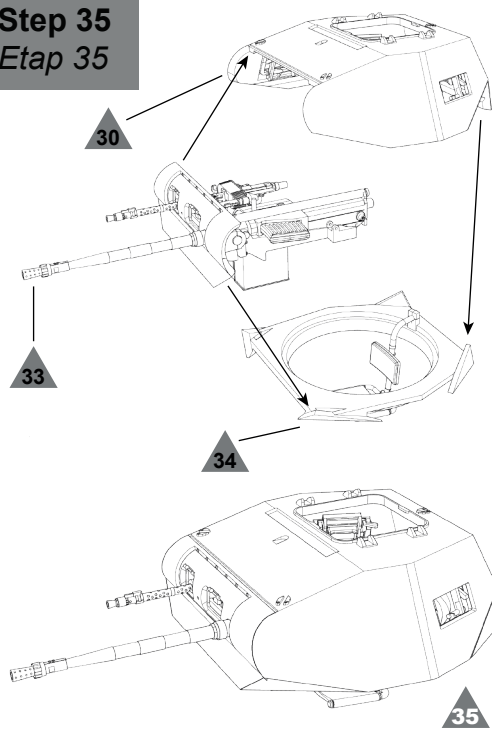
### Step 33 Etap 33



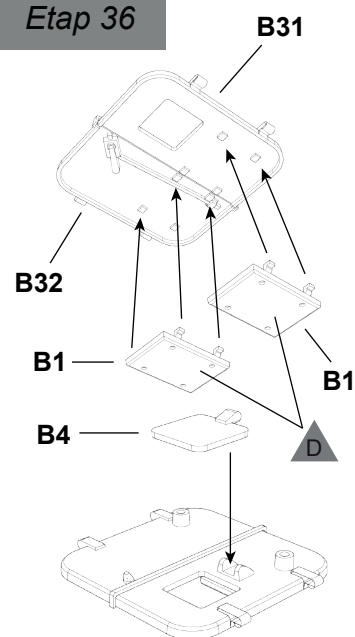
### Step 34 Etap 34



### Step 35 Etap 35



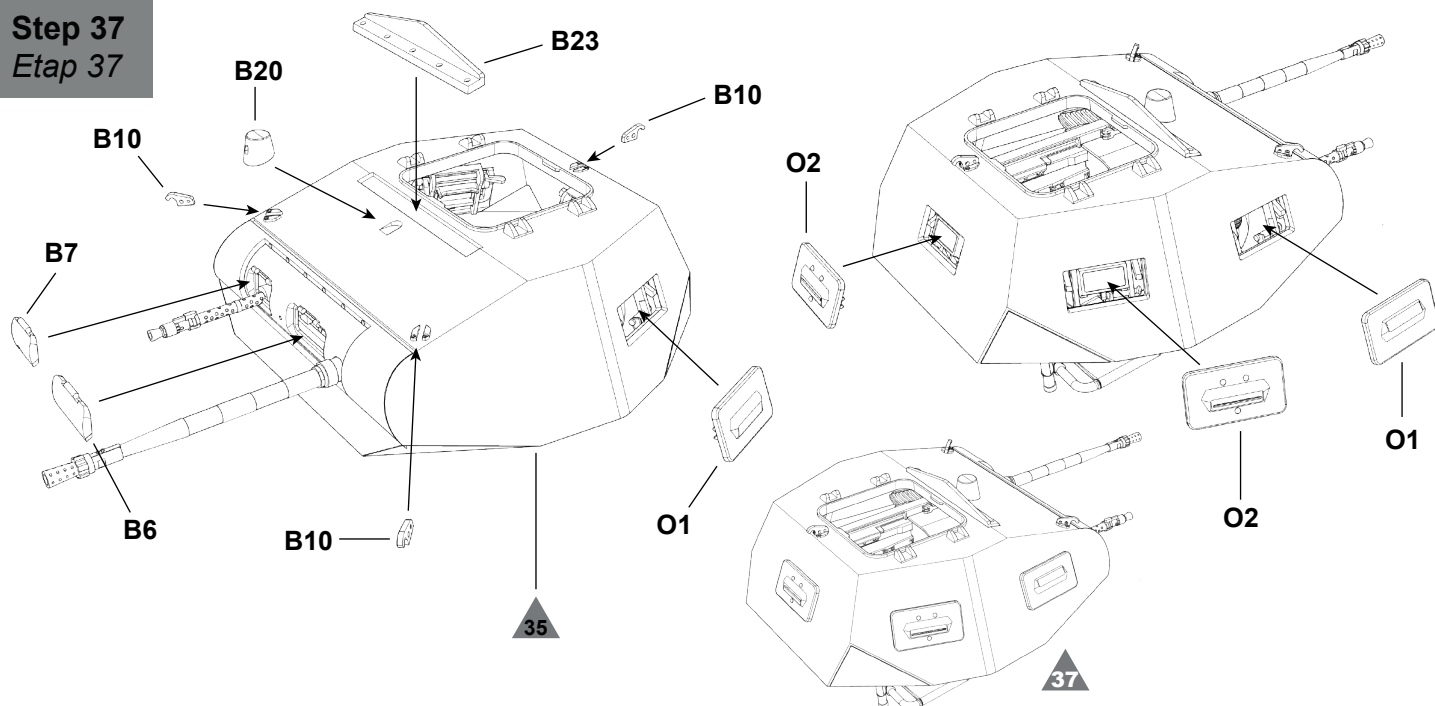
### Step 36 Etap 36



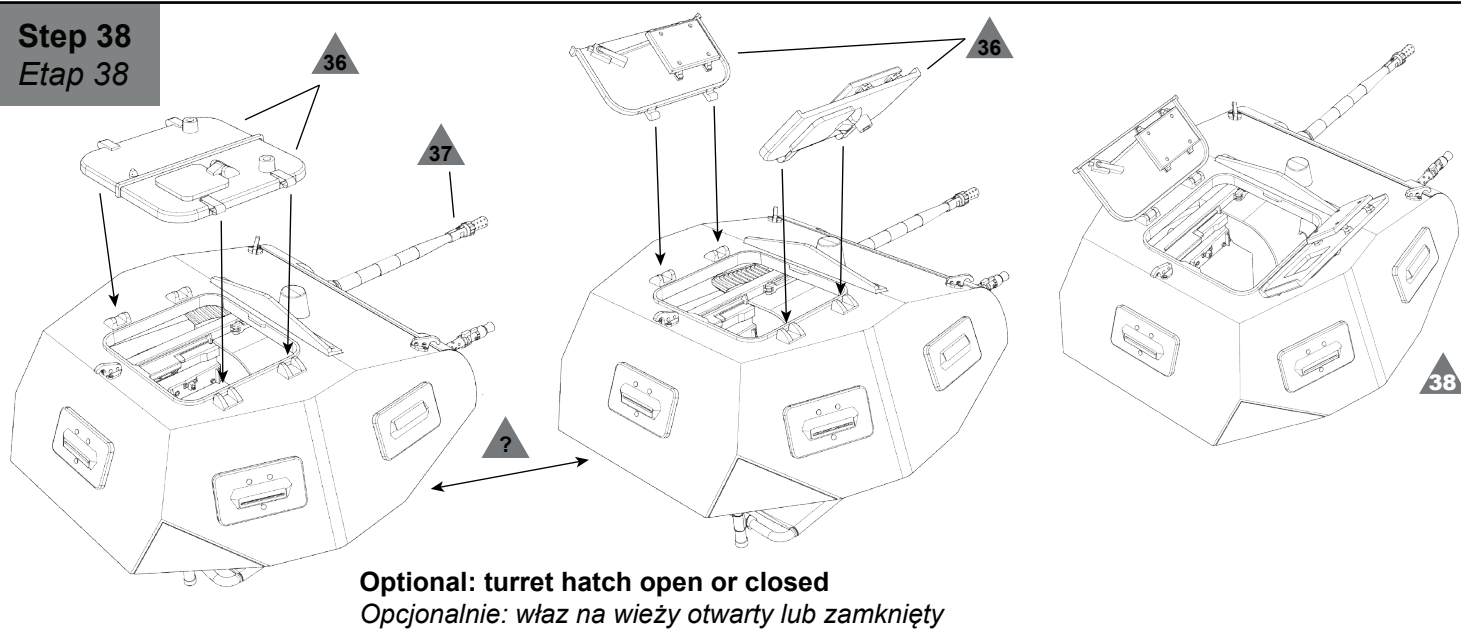
Do not glue B31 and B32 together  
Nie sklejać elementów B31 i B32



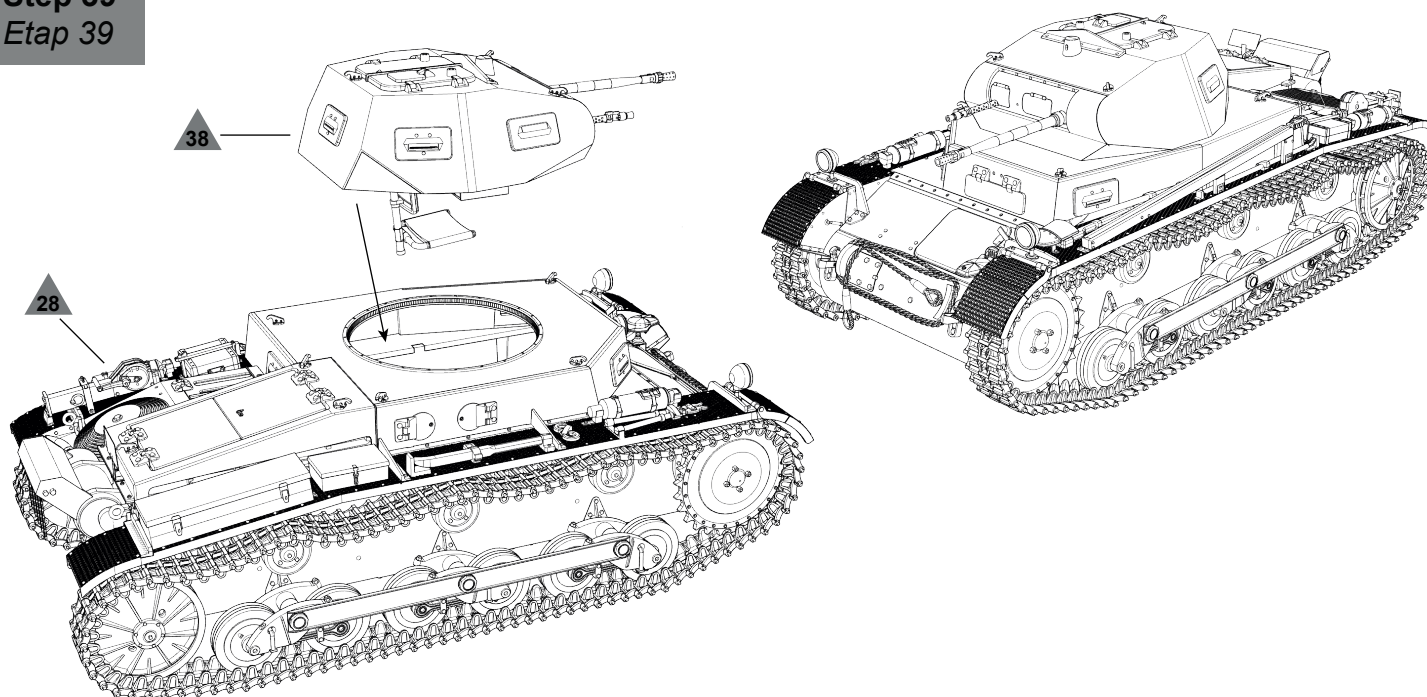
### Step 37 Etap 37



### Step 38 Etap 38



### Step 39 Etap 39



**Pz.Kpfw. II Ausf. a2, most likely from 4th Panzer Division of Wehrmacht, Poland, September 1939**  
*Pz.Kpfw. II Ausf a2, prawdopodobnie z 4. Dywizji Panzernej Wehrmachtu, Polska, wrzesień 1939 r.*

Crosses on the side of the turret (2) were covered with mud or painted over with a dark paint  
*Krzyże na bokach wieży (2) były pokryte błotem lub pomalowane ciemną farbą*

